



# BioBharati LifeScience Pvt. Ltd.

Developing Best Products for Quality Research of National Significance

EN-35, First Floor, Salt Lake, Sector-V, Kolkata, INDIA, PIN: 700091

Registered Office: 79, Purbachal Kalitala Road, Kolkata, INDIA, PIN: 700078

E-mail: [biobharati@gmail.com](mailto:biobharati@gmail.com), Web: [www.biobharati.com](http://www.biobharati.com)

## Product Name

Cat. No.

Pack Size

**Anti - I $\kappa$ B $\alpha$  Antibody**

**# BB-AB0040**

**80  $\mu$ g (80  $\mu$ l)**

**Product type:** Primary Antibody

**Clonality:** Polyclonal

**Source:** Rabbit

**Immunogen:** Full length human I $\kappa$ B $\alpha$  protein expressed in *E. coli*.

**Description:** The cytosolic NF $\kappa$ B/Rel transcription factors are in inactive state, complexed with the inhibitory I $\kappa$ B proteins. Phosphorylation-induced, proteasome-mediated degradation of I $\kappa$ B triggers their activation. The key regulatory step in this path way involves activation of I $\kappa$ B kinase (IKK) complex, whose catalysis is generally carried out by three tightly associated IKK subunits. IKK $\alpha$  and IKK $\beta$  serve as the catalytic subunits of the kinase. IKK $\gamma$  serves as the regulatory subunit. Phosphorylation of serines 177 and 181 in the activation loop of IKK $\beta$  (176 and 180 in IKK $\alpha$ ) causes conformational changes resulting in activation of IKK. Anti-I $\kappa$ B $\alpha$  antibody can be used for detection of I $\kappa$ B $\alpha$  protein by immunological techniques. This antibody is produced in rabbit by repeated injections of Immunogen.

**Purification:** Purified against human I $\kappa$ B $\alpha$  protein affinity chromatography.

**Specificity:** This antibody detects I $\kappa$ B $\alpha$  protein in eukaryotic cell extract and recombinant I $\kappa$ B $\alpha$  proteins expressed in prokaryotic cells.

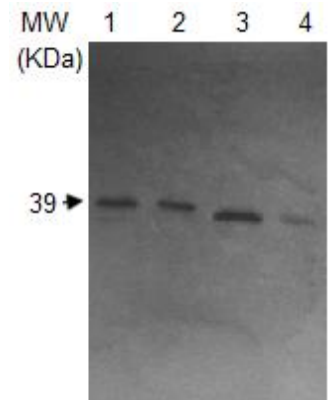
### Recommended Dilutions:

Western Blotting 1:2000

ELISA 1:1000

**Storage buffer:** Tris Buffer pH 7.4, containing 50% glycerol without azide.

**Storage instructions:** Store at -20°C (Recommended).



\*Western blot analysis of 293 (lane 1), CL2 (lane 2), RAW (lane 3), and A549 (lane 4) cell extract using Anti-I $\kappa$ B $\alpha$  polyclonal antibody. Band at ~39 KDa is for I $\kappa$ B $\alpha$  proteins.

\*N. B. (Membrane blocking): One hr at RT in 5% (w/v) non-fat milk; (Primary Ab): Overnight at 4°C in 1% non-fat milk; (Secondary Ab): One hr at RT in 1% non-fat milk. All incubations and washings are in 1X TBS, 0.1% Tween-20.

Exp. Date: 18 months upon receiving at proper storage condition as mentioned in datasheet.